

**ICG** **INDOFINE Chemical Company, Inc.**

121 Stryker Lane, Bldg. 30, Suite 1 • Hillsborough, NJ 08844 • U.S.A.

Phone: (908) 359-6778 • FAX: (908) 359-1179

website: [www.indofinechemical.com](http://www.indofinechemical.com)

e-mail: [chemical@indofinechemical.com](mailto:chemical@indofinechemical.com)

**CERTIFICATE OF ANALYSIS**

Catalog Number: 06-1516

Product Name: **HYPAPHORINE**

CAS Number: [487-58-1]

Lot Number: 2212732

Chemical Formula: C<sub>14</sub>H<sub>18</sub>N<sub>2</sub>O<sub>2</sub>

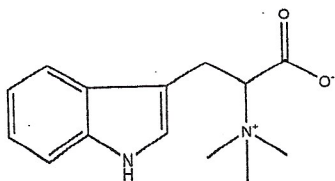
Molecular Weight: 246.31

Appearance: Off-white powder

Water Content: <0.1%

Storage: Store at 2-8°C. Protect from light.

Purity(HPLC): 99.98%



Prepared by:  
*Ramesh Mandadi*  
Ramesh Mandadi  
Director of Operations

Reviewed and Approved by:  
*Sujata Moton*  
Sujata Moton  
VP



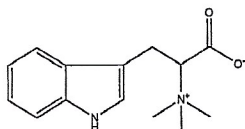
# INDOFINE Chemical Company, Inc.

121 Stryker Lane, Bldg. 30, Suite 1 • Hillsborough, NJ 08844 • U.S.A.

Phone: (908) 359-6778 • FAX: (908) 359-1179

website: [www.indofinechemical.com](http://www.indofinechemical.com)

e-mail: [chemical@indofinechemical.com](mailto:chemical@indofinechemical.com)



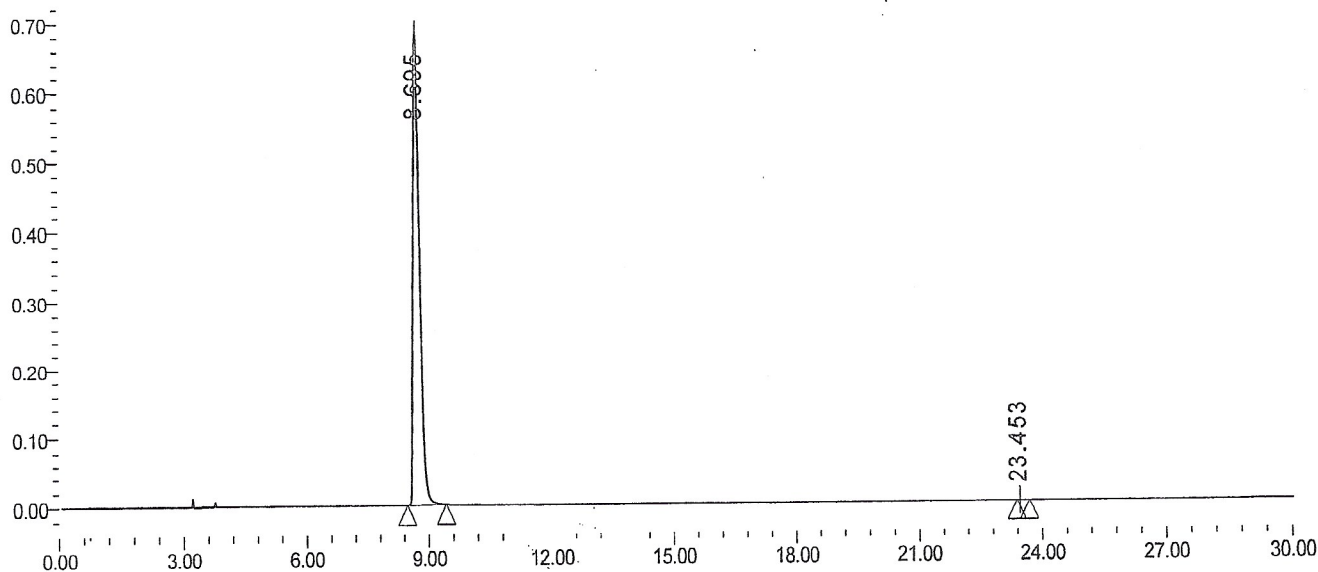
## HPLC ANALYSIS

Catalog No.: 06-1516  
Product Name: Hypaphorine  
Lot No.: 2212732

### SAMPLE INFORMATION

Sample Name:	Hypaphorine	Acquired By:	PRF01
Sample Type:		Sample Set Name	
Vial:	89	Acq. Method Set:	Hypaphorined
Injection #:	1	Processing Metho	sample
Injection Volume:	5.00 ul		
Run Time:	30.0 Minutes		

Auto-Scaled Chromatogram



Peak Results

	RT	Area	% Area	Height	Plate Count	Resolution	Asymmetry
1	8.695	7509595	99.98	686034	14566.13		1.68
2	23.453	1358	0.02	183	265754.72	69.90	2.02

Prepared by:

*Ramesh Mandadi*

Ramesh Mandadi

Director of Operations

Reviewed and Approved by:

*Sujata Moton*

Sujata Moton

VP